

2009 Brochure

- Power Supply
- Electrophoresis System
- Gel Documentation System
- Thermoblock Reactor
- Stirring Water Bath
- MS Shaker
- MS Incubator
- MS Peristaltic Pump
- Fermentation & Cell Cultivation Technology

Innovative Life Sciences Tools

Power Supply



MP-100

Handy 100V Power Supply

Specifications	MP-100
Max. Voltage	100V
Max. Watt	40W
Voltage Selection	50V and 100V

Minis 150V / 300V Power Supply

Specifications	Minis 150VS	Minis 150VP	Minis 300VS	Minis 300VP
Max. Voltage	150V		300V	
Max. Current	600mA		400mA	
Max. Watt	60W			
Terminator Pairs	2 Pairs			
Voltage Selection	25V, 50V, 75V, 100V, 125V, 150V		50V, 100V, 150V, 200V, 250V, 300Vs	
Timer	1~999 mins with alarm, continuou			



Minis 150VS



Minis 150VP



Minis 300VS



Minis 300VP

MP 250V / MP 300V Power Supply

Specifications	MP-250V	MP-300V
Output Voltage / Inc	2~250V/1V	2~300V/1V
Output Current / Inc	1 ~ 700mA / 1mA	
Max. Watt	150W	
Operating Constant	Voltage or Current	
Timer	1~999 mins with alarm, continuous	
Terminator Pairs	4 Pairs	



MP-250V



MP-300V

MP 500V / MP 3AP Power Supply

Specifications	MP-500V	MP-3AP
Output Voltage / Inc	5 ~ 500V / 1V	5 ~ 300V / 1V
Output Current / Inc	1 ~ 800mA / 1mA	10 ~ 3000mA / 10mA
Output Watt / Inc	300W / 1W	
Operating Constant	Voltage or Current or Power	
Program Storage	30 programmed files	
Program Multi-Step	Up to 6 steps	
Display	2.6" LCD	
Timer	Constant Mode: 1~9999 mins with alarm, continuous Programmable Mode : 1~999 mins with alarm, continuous	
Terminator Pairs	4 Pairs	



MP-500V



MP-3AP

Electrophoresis System

Mini Horizontal Gel Electrophoresis System

Specifications	MJ-105-S	MJ-105-R	MT-108
Unit Dimension (W x D x H)	140 x 140 x 53mm		136 x 188 x 58mm
Gel Dimension (W x L)	52 x 60mm		50 x 83mm
	107 x 60mm		105 x 83mm
Max. Sample	25		
Rapid Casting Gel	Use Gel Maker Stand		



CE
MJ-105-S



CE
MJ-105-R



CE
MT-108

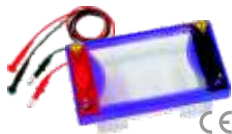


Midi and Maxi Horizontal Gel Electrophoresis System

Specifications	ME10	ME15	Me20	ME26
Unit Dimension (W x D x H)	220 x 125 x 90mm	265 x 175 x 90mm	395 x 230 x 90mm	500 x 280 x 90mm
Gel Dimension (W x L)	100 x 70mm	150 x 70mm	200 x 100mm	260 x 160mm
	100 x 100mm	150 x 100mm	200 x 200mm	260 x 240mm
		150 x 150mm	200 x 250mm	260 x 320mm
Max. Sample	50 for 100 x 70mm Tray 100 for 100 x 100mm Tray	70 for 150 x 70mm Tray 140 for 150 x 100mm Tray 210 for 150 x 150mm Tray	200 for 200 x 100mm Tray 450 for 200 x 200mm Tray 550 for 200 x 250mm Tray	336 for 260 x 160mm Tray 504 for 260 x 240mm Tray 672 for 260 x 320mm Tray
Rapid Casting Gel		Use Casting Dams		Use Flexi Caster(optional)



ME10



ME15



Me20



ME26

Vertical Gel Electrophoresis Apparatus

Specifications	MV-10DSYS	MV-10WDSYS	MV-20DSYS
Unit Dimension (W x D x H)	190 x 130 x 150mm	260 x 160 x 160mm	260 x 160 x 280mm
Plate Dimension (W x L)	100 x 100mm	200 x 100mm	200 x 200mm
Gel Dimension (W x L)	75 x 80mm	180 x 80mm	160 x 175mm
Max. Sample Capacity	80 samples	192 samples	192 samples
	20 samples per gel	48 samples per gel	48 samples per gel
Rapid Casting Gel	Use Gel Maker Stand		



CE
MV-10DSYS



CE
MV-10WDSYS

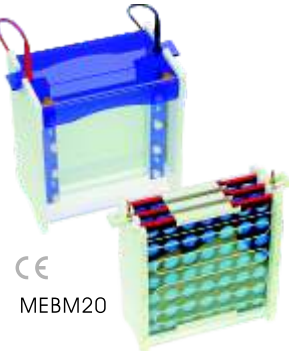
CE
MV-20DSYS



Electro Blot System

Specifications	MEBM10	MEBM20
Unit Dimension(W x L x H)	190 x 130 x 190mm	240 x 160 x 260mm
Gel Dimension(W x L)	100 x 100mm	200 x 200mm
Max. Sample	5 Blots, 100 x 100mm	5 Blots, 200 x 200mm 20Blots, 100 x 100mm

CE
MEBM10

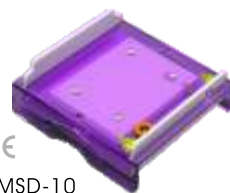


CE
MEBM20

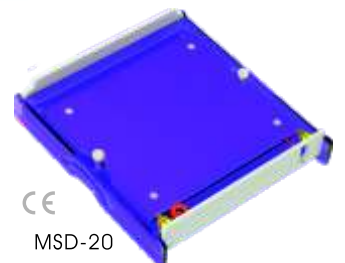
Semi Dry System

Specifications	MSD-10	MSD-20
Unit Dimension (W x L x H)	160 x 160 x 70mm	260 x 260 x 70mm
Gel Dimension (W x L)	100 x 100mm	200 x 200mm
Max Sample	1 Blot, 100 x 100mm	1 Blot, 200 x 200mm 4 Blots, 100 x 100mm

CE
MSD-10



CE
MSD-20



Gel Documentation System

CCD Gel Documentation System

Specifications	UVCI	CI-01
Max. CCD Resolution	811 x 508 pixels	
Pixel Density	8 bit	
Lens	F1.2, 8.5 ~ 51mm	
Safety Device	Safety Door Switch	
Filter	Close up filter and EtBr or SYBR Green filter (optional)	
Inner White light	2 x 3 Watt White LED	
Unit Dimension (W x D x H)	350 x 530 x 670mm	290 x 220 x 320mm
Built-in UV Transilluminator	254 / 312 / 365nm selectable	N/A
UV Transilluminator Filter Size	210 x 210mm	N/A
Control Panel	10.4" colorful touch screen	PC

New

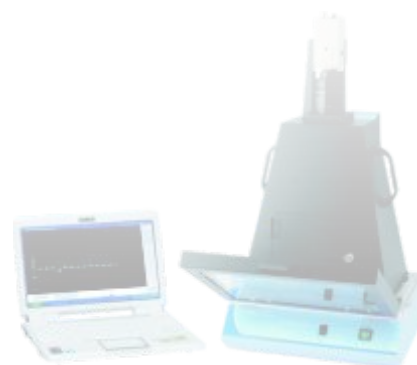


UVCI CE

New



CE CI-01



Digimage Gel Documentation System

Specifications	UVDI	DI-01
Camera	14.7 Mega Pixels	
Display	8" high resolution TFT screen	
Max. Aperture	f/ 2.8 (W) ~ f/ 4.5(T)	
Shutter Speed	15 ~ 1/4000 sec.	
Safety Device	Safety Door Switch	
Filter	Close up filter and EtBr or SYBR Green filter (optional)	
Inner White light	2 x 3 Watt White LED	
Unit Dimension (W x D x H)	335 x 540 x 470mm	290 x 220 x 320mm
Built-in UV Transilluminator	254 / 312 / 365nm selectable	N/A
UV Transilluminator Filter Size	210 x 210mm	N/A



UVDI CE



CE DI-01



UV Transilluminator

Specifications	MUV21	MUV26
Filter Size	210 x 210mm	260 x 210mm
Wavelength	254 / 312 / 365nm selectable	
Light Source	8W x 6 tube	



MUV21 series



MUV26 series

Gel Dryer

Specifications	MG-2131	MG-3545
Drying Area (L x W)	210 x 310mm	350 x 450mm
Temperature Control Range	ambient to 90°C	
Temperature Calibration	Yes	



MG-2131



MG-3545

Thermoblock Reactor

Dry Bath Incubator

Specifications	EL-01 (One Block)	EL-02 (Dual Block)	MD-01N (One Block)	MD-02N (Dual Block)
Display	LCD display		LED display	
Unit Dimension (W x L x H)	152 x 150 x 135mm	152 x 230 x 135mm	200 x 290 x 80mm	
Heating Chamber	Molded aluminum alloy chamber			
Temperature Control Range	5°C above ambient to 150°C			
Temperature Calibration	Yes			
Temperature Uniformity at 37°C	± 0.2°C			
Temperature Accuracy at 37°C	± 0.2°C			
Timer	up to 99(hr): 59(min), continuous		1 ~ 999 mins, continuous	



EL-01

EL-02



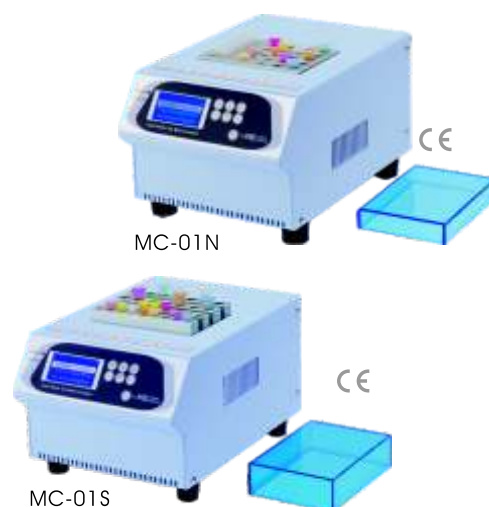
MD-01N



MD-02N

Cool-Hotter Dry Bath Incubator

Specifications	MC-01N	MC-01S
Display	2.6" LCD	
Temperature Control Range	-10~100°C in the enviroment of 25°C	
Temperature Calibration	Yes	
Temperature Uniformity at 37°C	± 0.2°C	
Temperature Accuracy at 37°C	± 0.2°C	
Timer	1 ~ 9999mins, continuous	
Chamber Material	Aluminum	
Chamber Dimension	125 x 90 x 50mm	125 x 90 x 30mm
Operation Mode	<ul style="list-style-type: none"> ▪ Constant temperature ▪ Programmable: 1 ~ 4 steps , up to 9 cycles ▪ Annealing program 	



MC-01N

MC-01S

Stirring Water Bath

Stirring Water Bath

Specifications	SWB-10L-1	SWB-10L-2	SWB-20L-1	SWB-20L-3
Bath Capacity	approx. 10L		approx. 20L	
Heating Power	600W		800W	
Number of Stirring Mechanism	1	2	1	3
Stirring Speed	400 ~ 1800rpm			
Display	LCD			
Bath Temperature	5°C above ambient to 99°C			
Temperature Calibration	Yes			



SWB-10L series

CE



SWB-20L series

CE

MS Shaker

MS Shaker

Specifications	MS-NOR	MS-NRK	MS-NRC
Motion	Orbital	Rocking	Reciprocal
Moving Feature	Orbital moving in one direction or two direction	Max. title angle: 12°	Max. stroke length: 20mm
Speed / Inc	0 ~ 200rpm / 1rpm	5 ~ 100rpm / 1rpm	
Carry Capability	10kg	15kg	
Timer	1 ~ 9999 mins with alarm, continuous		
Platform Dimension (W x L)	260 x 260mm		



MS-NOR



MS-NRK



MS-NRC



2/3D Waver Shaker

Specifications	MW-23
Motion	Orbital and Nutation
Speed / Inc	5 ~ 100rpm / 1rpm
Carry Capability	15kg
Timer	1 ~ 9999 with alarm, continuous
Platform Dimension	330 x 330mm (W x L)



MW-23



MW-WB



Hybridization Water Bath

Specifications	MW-WB
Bath Capacity	approx. 2.8L
Bath Temperature	Ambient to 95°C
Controller	Digital Microprocessor Controller
Bath Tank Material	Stainless steel

MS Peristaltic Pump

Digital Peristaltic Pump

Specifications	MU-D01	MU-D02
Controller	Digital Microprocessor Controller	
Rpm / Inc	20 ~ 300rpm / 1rpm	5 ~ 600rpm / 1rpm
Motor	Brushless Motor	
Power	50W	100W
Number of Roller	3	
Variable Flow Rate	1.2 ~ 1,140 ml/min	0.3 ~ 2,280 ml/min



MU-D01

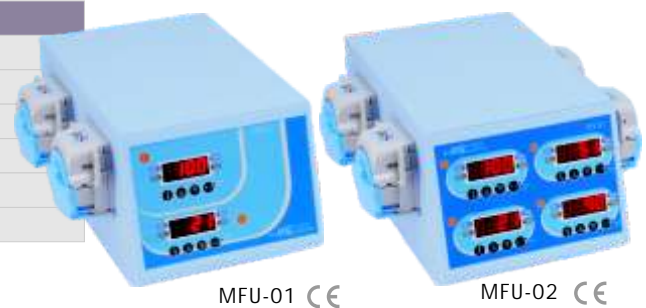


MU-D02



Dual and Tetrad Peristaltic Pump

Specifications	MFU-01	MFU-02
Controller	Digital Microprocessor Controller	
Rpm / Inc	0 ~ 100 / 1%	
Motor	Stepping Motor	
Number of Roller	3	
Number of Peristaltic Pump	2	4
Variable Flow Rate	0.6 ~ 380 ml/min	



MFU-01



MFU-02



MS Incubator

MS Incubator

Specifications	MO-01	MO-HY	MO-VT	MO-VT-HY
Shaker	N/A	N/A	Vortex	
Shaking Speed	N/A	N/A	50~1500rpm	
Platform(W x L)	2 stainless Steel Mesh Plate (325 x 345 mm)		300 x 200mm	
Rotisserie	N/A	Yes	N/A	Yes
Rotisserie Speed	N/A	5~100rpm	N/A	5~100rpm
Temperature Control Range	ambient to 85 °C			
Temperature Uniformity at 37 °C	± 0.2 °C			
Temperature Accuracy at 37 °C	± 0.2 °C			
Inner Chamber Dimension	340 x 260 x 250mm (W x L x H)			
Temperature Calibration	Yes			



MO-01



MO-HY



MO-VT



MO-VT-HY

Specifications	MO-OR	MO-OR-HY	MO-RK	MO-RK-HY	MO-RC	MO-RC-HY
Shaker	Orbital		Rocking		Reciprocal	
Shaking Speed	0~200rpm		5~100rpm		5~100rpm	
Platform(W x L)	270 x 200mm					
Rotisserie	N/A	Yes	N/A	Yes	N/A	Yes
Rotisserie Speed	N/A	5~100rpm	N/A	5~100rpm	N/A	5~100rpm
Temperature Control Range	ambient to 85 °C					
Temperature Uniformity at 37 °C	± 0.2 °C					
Temperature Accuracy at 37 °C	± 0.2 °C					
Inner Chamber Dimension	340 x 260 x 250mm (W x L x H)					
Temperature Calibration	Yes					



MO-OR



MO-RK



MO-RC



MO-OR-HY



MO-RK-HY



MO-RC-HY

Fermentation & Cell Cultivation Technology

MS-B Series



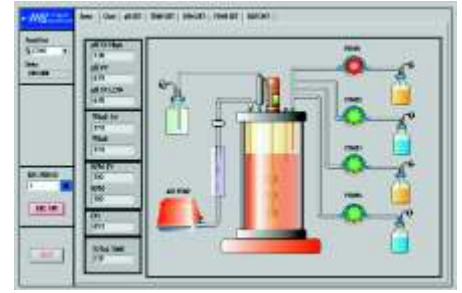
MS-B-D Series



Superior Bioreactor

Application

For cultivation of mammalian; plant; insect cells and microbial



MS-F-D Series



MS-F Series



Advance Fermentor

Application

For cultivation of plant; insect cells and microbial

Air Lift Fermentor

Application

To culture some cell lines are so fragile and will be easily sheared by any type of mechanical impeller, for example fungi.



MS-L Series

Photosynthesis Fermentor

Application

Photosynthesis is defined as the conversion of light energy into chemical energy by living organisms. It is affected mainly by light intensity and is divided into:

Oxygenic photosynthesis accomplished by:

- Plants
- Algae
- Cyano bacteria (blue-green algae)

An oxygenic photosynthesis accomplished by:

- Bacteria (e.g. purple bacteria)



Photosynthesis System



MS-LP Series

Classic Fermentor

Application

This is a economical system. There are some optional items can be chosen to meet minimal culture requirement. It is for cultivation of plant ; insect cells and microbia.



MS-C Series



MS-P Series

Pilot Fermentor

Application

For cultivation of mammalian; plant; insect cells and microbial

